



Program Content

- Child growth and development
- Health, safety and nutrition
- Behavior guidance techniques
- Child abuse and neglect
- Rules and regulations governing child care
- Community and environmental issues
- Lesson and program planning
- Inclusion of children with special needs
- Balancing family, school and work
- Employability skills
- Implementation of developmentally appropriate practices for children birth through age eight
- Language development and emergent literacy

Program Length

600 hrs | Full Time 6 months
Part Time 12 months

Approximate Cost

\$2,158

Location

Main Campus

Schedule

- **Full Time: Monday - Friday**
7:00 am – 2:30 pm
- **Part Time: Monday - Friday**
7:00 am – 10:30 am
11:00 am – 2:30 pm

Enrollment of New Students

- August
- October
- January
- April

Gainful Employment

- For more information about this program, visit the link below.

EARLY CHILDHOOD EDUCATION/EARLY CHILDHOOD PROFESSIONAL CERTIFICATE (ECPC)



Description of Program

The Early Childhood Education/Early Childhood Professional Certification (ECPC) Program prepares students for employment within the industry as early childhood educators, child care personnel, lead preschool teachers, VPK teachers, before-care/after-care workers and supervisors, child development specialists, camp counselors/supervisors, directors/owners, and family day care home operators. Included are the following major areas of training: child growth and development; health; safety; nutrition; behavior guidance techniques; child abuse and neglect; rules and regulations governing child care; observation, screening and assessment; community and environmental issues; language development and emergent literacy; lesson and program planning; implementation of developmentally appropriate practices for children birth through age eight; inclusion of children with special needs; communication; balancing family, school and work; employability skills; labor issues; entrepreneurship; management and finance. Early Childhood Education is a Florida Department of Education Early Childhood Professional Certificate (ECPC) program. The ECPC is accepted for the Department of Children and Families (DCF) Staff Credential. Students who complete the ECE/ECPC program are prepared to pursue the national CDA credential and are also eligible for nine (9) college credits at any state public university.

Requirements for Admission

- Orientation/Testing/Counselor Interview
- High School Diploma or GED

Industry Certification & State Credential Exams

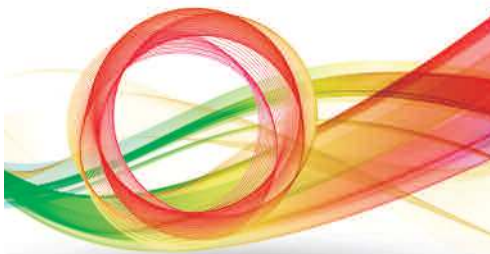
Students will be prepared to take an approved state and/or nationally recognized industry certification or licensure exam in their field of study.

- Child Development Associate (CDA)
- Early Childhood Professional Certificate (ECPC)
- Staff Credential

College Credit Transfer Opportunity and/or Advanced Credit

Upon completion of the program and meeting eligibility requirements, students may be awarded credits toward an Associate Degree by Broward College or the Florida College System.

For eligibility requirements, visit <http://www.broward.edu/academics/cpl/Pages/technical-college.aspx>



Welcome to Sheridan Technical College!

ADMISSION AND REGISTRATION PROCEDURES

1. Attend Orientation

Program specific orientation is held Monday through Thursday. To register for orientation:

- **Main (Hollywood) Campus:** Report to Building 11, Office of Student Affairs no later than 8:30 a.m.
- **West (Pembroke Pines) Campus:** Report to the main office no later than 8:00 a.m.

2. Apply for Financial Assistance (OPTIONAL)

- If you require financial assistance please complete the Free Application for Federal Student Aid (FAFSA) as soon as possible. Delays in completing the financial aid process may affect your ability to register on time.

3. Take the Test of Adult Basic Education (TABE)

- Students enrolled in a postsecondary program of 450 hours or more are required to take and pass a basic skills test in order to receive a vocational certificate at the time of program completion. The TABE test is approximately 2.5 hours and assesses students in the areas of reading, math and language. To register please bring \$15.00 and a valid picture ID. The test schedule and registration location is as follows:
- **Main (Hollywood) Campus:** M-TH report to Building 11, Office of Student Affairs no later than 9:00 a.m.
(Report to Building 11 no later than 8:30 a.m. when also attending orientation)
- **West (Pembroke Pines) Campus:** T, W, F report to the main office no later than 8:00 a.m.

4. Counselor Interview

- You must meet with your program counselor/advisor to finalize the admissions process. Topics to be discussed include: TABE scores, TABE exemption, remediation, Florida residency for tuition purposes, etc. Test scores cannot be provided over the phone. There are no appointments required to meet with the program counselor/advisor. Please contact our offices to obtain counselor/advisor office hours.

5. Register for Class

- Registration is on a first come, first served basis. Prospective students can register upon receiving an acceptance letter. Registration is held throughout the year, so verify course availability and registration dates with the program counselor/advisor. Textbooks, uniforms, kits and all other required supplies must be purchased prior to the first day of class

BASIC SKILLS EXEMPTION - You may be exempt from the TABE if you:

- Entered 9th grade in a Florida public school in the 2003-2004 school year, or any year there after, and earned a Florida standard high school diploma (official high school transcript required);
- Possess a college degree at the associate in applied science (AAS) level or higher from an accepted accredited college or university (official diploma or transcript required);
- Demonstrate readiness via the 2014 GED®, P.E.R.T, ACT, SAT, WBST and/or GAIN (official test results required);
- Active duty member of any branch of the United States Armed Services (paper order or ID card required);
- Pass a state or national industry certification or licensure examination that is identified in State Board of Education rules and aligned to the CTE program in which the student is enrolled (official test results required); or
- Enrolled in an apprenticeship program that is registered with FDOE.

EARLY CHILDHOOD EDUCATION/EARLY CHILDHOOD PROFESSIONAL CERTIFICATE (ECPC) (E300100)

Tuition/Registration \$1,885

PAVE	\$1,680
Lab	\$.90
Registration Fee	\$.60
Student Activity Fee	\$.10
Test Fee	\$.15
Other Required Fees	\$.30

Books/Supplies \$223

Child Care Today Textbook + 1 Year Subscription
ISBN: 9780076634606

Early Childhood Certificate Program

Uniform Top

Uniform Pants

Uniform T-Shirt

Industry Credentials \$50

Child Development Associate (CDA)
Early Childhood Professional Certificate (ECPC)

Approximate Program Cost \$2,158

Prices are for Florida Residents. Fees listed are based on the number of class days according to the District calendar. Books and Supplies are subject to change.

STC_Program Sheets Rev 10.2017

Sheridan Technical College & Technical High School – Thomas Monclovich, Director

Mary A. Barba, Assistant Director | Barrett Goldman, Assistant Director | Annette Johnson, Assistant Director | Jose Laverde, Assistant Director



Sheridan Technical College is able to provide more information about our graduation rates, the median debt of students who have completed the programs, and other important information. Please visit our website at <http://www.sheridantechnicalcollege.edu/gainful-employment-pages>.



Sheridan Technical College is accredited by the Commission of the Council on Occupational Education.
7840 Roswell Road, Building 300, Suite 325
Atlanta, GA 30350
Tel (770) 396-3898 • Fax (770) 396-3790
www.council.org



Sheridan Technical College Practical Nursing Program is accredited through Accreditation Commission for Education in Nursing, Inc. (ACEN)
3343 Peachtree Road NE, Suite 850
Atlanta, GA 30326
Tel (404) 975-5000 • Fax (404) 975-5020
www.acenursing.org



The School Board of Broward County, Florida, prohibits any policy or procedure which results in discrimination on the basis of age, color, disability, gender identity, gender expression, genetic information, marital status, national origin, race, religion, sex or sexual orientation. The School Board also provides equal access to the Boy Scouts and other designated youth groups. Individuals who wish to file a discrimination and/or harassment complaint may call the Director, Equal Educational Opportunities/ADA Compliance Department & District's Equity Coordinator/Title IX Coordinator at 754-321-2150 or Teletype Machine (TTY) 754-321-2158. Individuals with disabilities requesting accommodations under the Americans with Disabilities Act Amendments Act of 2008, (ADAAA) may call Equal Educational Opportunities/ADA Compliance Department at 754-321-2150 or Teletype Machine (TTY) 754-321-2158. www.BrowardSchools.com